



Albion House
48 Albert Road North
Reigate, Surrey, RH2 9EL
United Kingdom

info@tachosys.com

+44 (0) 208 687 3900



Content Overview

- Configuration
- WiFi Setup
- Connecting to digicentral
- Troubleshooting



Join us on social media



Contents

digiConnect Installation	2
digicard-AUT hardware	3
digicard-AUT configuration using digiConnect	4-5
Company Card Key Generation (digicentral)	6
Connection Testing and Authentication	7

digiConnect Windows® Software - V5.27 onwards

digiConnect Windows® Software v5.27 onwards

Minimum Recommended PC Specification:

- > Operating System: Windows 7 / 8 / 8.1 / 10 / 11
- > At least 1 Free USB port

Important: Do not connect the digicard-AUT before commencing the software installation.

Installing digiConnect:

1. Download the latest version of digiConnect from tachosys.com.
2. Select your required installation language and then click 'Next'.
3. You will receive a welcome message, simply click 'Next'.
4. Read the terms of the Licence Agreement then click on the 'I accept the terms in the Licence agreement' option and then click 'Next'. If you do not accept the terms the installation will be terminated.
5. Choose the folder where you wish the software program files to be installed. The default folder is the standard location for Windows® programs. Click 'Next'.
6. Click 'Install' to begin the installation. This may take several minutes.
7. Finally leave the box labelled 'Launch digiConnect' ticked and click 'Finish'.
8. If you opted to launch digiConnect at the end of the installation you will be taken to the main options menu to configure your individual settings.

Upon completion, you will see the digiConnect icon appear in the Task Bar and the system tray.

Testing Connections and Authentication

Testing the Connection

After the information has been entered to configure the digicard-AUT, click the "Test" button. This will test that the device connects to the WiFi, to digicentral and that the digicentral company card credentials are correct.

The screenshot shows a configuration window with the following sections:

- WiFi:** SSID (masked with asterisks) and Passphrase (masked with asterisks). A green checkmark is visible to the right of the Passphrase field.
- digiCentral Server:** Host name (dcweb.tachosys.com) and Port number (4616). A green checkmark is visible to the right of the Port number field.
- Company Card Identification:** Account ID (masked with asterisks) and Key (masked with asterisks). A green checkmark is visible to the right of the Key field.

A blue button labeled "Test" is located at the bottom right of the window and is circled in red.

Fig 5

If all the information is correct you should get three green ticks (see Fig 5). If any connection fails, check that the information entered is correct or contact your system administrator.

Once your digicard-AUT has been configured and the connection test is successfully completed, disconnect the device from your PC.

Running digicard-AUT for authentication

Using the 5v USB power supply provided, plug the digicard-AUT into the mains supply.

The red power LED should flash before going off. The blue LED should intermittently flash as the device seeks to connect to the WiFi network.

Enter the company card into the device (chip nearest the LED indicators). The red LED should change to green, indicating a company card is present. The blue LED should turn solid once the WiFi connection has been established.

The connection between the digicard-AUT and digicentral has now been established, enabling remote download devices to authenticate against the company card.

Generating the Company Card Key

Generating the Company Card Key

To generate a company card identification key, log into your digicentral account (the same account as specified in Host Name). Navigate to the "Company Cards" tab and select "Register new company card" (admin only).

In the description field, which is free form, you can be as descriptive as you wish as it will be used to identify the card in what could

be a long list. A description such as "Lincolnshire NDC" is more useful than the card number for instance. This field is not used by the system to identify the card hence being free form.

In the "Connected alert interval" field you should enter a numerical value representing the number of hours you wish to wait before the system sends an alert to an error on a company card. Click "Confirm" and you will automatically navigate back to the company card list.

The newly registered company card will be in the company card list on digicentral. The new entry will have an associated "Key". Copy and paste this into the "Key" field in the digicard-AUT configuration settings.

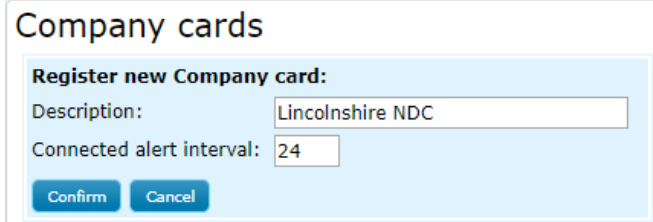


Fig 4

digicard-AUT Hardware

USB cable. Connect to a PC (for configuration) or using the supplied 5v USB power supply for power.

Card slot. Insert card with chip facing LED indicators



LED indicators

RED / GREEN	Power and activity
BLUE	WiFi Connection

When plugging into the wall, ensure that you use the 5v USB power supply provided. Using other USB power supplies may invalidate your warranty.



OR



Device Configuration using digiConnect

Connecting and configuring the digicard-AUT

1. Connect the digicard-AUT to a free USB port on your PC.
2. Wait for Windows to locate and install the appropriate drivers and confirm that the hardware is ready to use.
3. Open the digiConnect software. Your digicard-AUT will appear in the main digiConnect window (Fig 1).

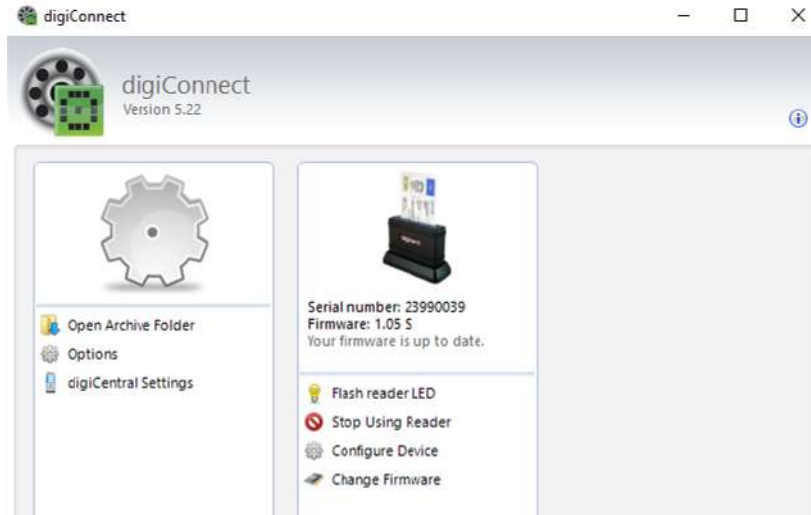


Fig 1

4. If you are using a digicard or digicard-AUT device, you can use the "Flash reader LED" function to identify the device. This feature will not work with other card reading devices.
5. Click the "Configure Device" option to enable digiConnect to configure the digicard-AUT settings.

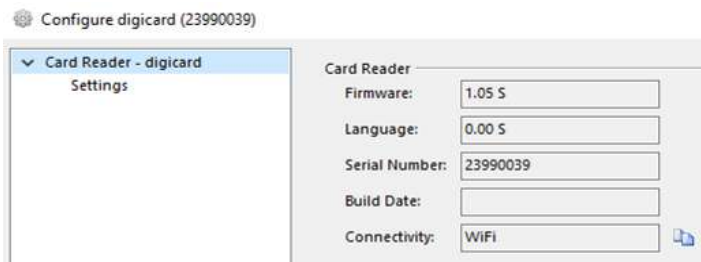


Fig 2

6. On the initial screen, you can see the digicard-AUT's information.
7. Select "Settings" from the left hand menu to configure the device.

Device Configuration using digiConnect

WiFi Settings

To connect to a WiFi network, click the drop down arrow in the "SSID" box. This should display all available WiFi networks. Select the relevant network and then enter the network password into the "Passphrase" box.

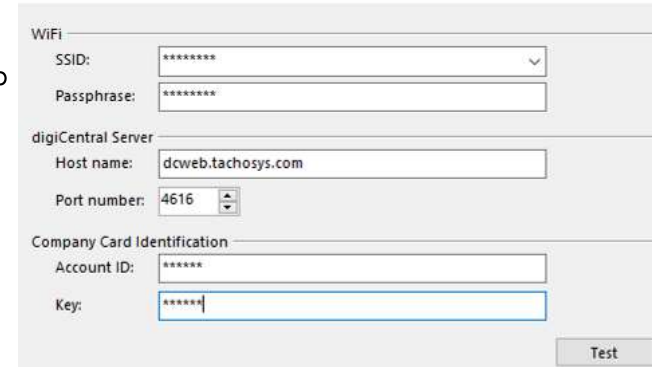


Fig 3

digicentral Server

Enter the Host name of your digicentral server. This will either be provided by your analysis provider or will match your own digicentral server settings. The Port Number should be left as 4616 unless you are hosting your own digicentral server.

Company Card Identification

To link the digicard-AUT with digicentral in order to authenticate a specific company card, you need to enter the digicentral Account ID and associated Key.

The Account ID can be found in the top right hand corner of your digicentral web platform (e.g. TACHOSYS00).