



# digicard

## User Guide



# Contents

<b>digiConnect Installation</b>	<b>3</b>
<b>digicard Connection &amp; Configuration</b>	<b>4</b>
<b>digiConnect Archiving</b>	<b>5</b>
<b>digicentral Configuration</b>	<b>6</b>
<b>Authentication &amp; Troubleshooting</b>	<b>7</b>

# digiConnect Installation

## digiConnect Windows® Software v5.27 onwards

### Minimum Recommended PC Specification:

- > Operating System: Windows 7 / 8 / 8.1 / 10 / 11
- > At least 1 Free USB port

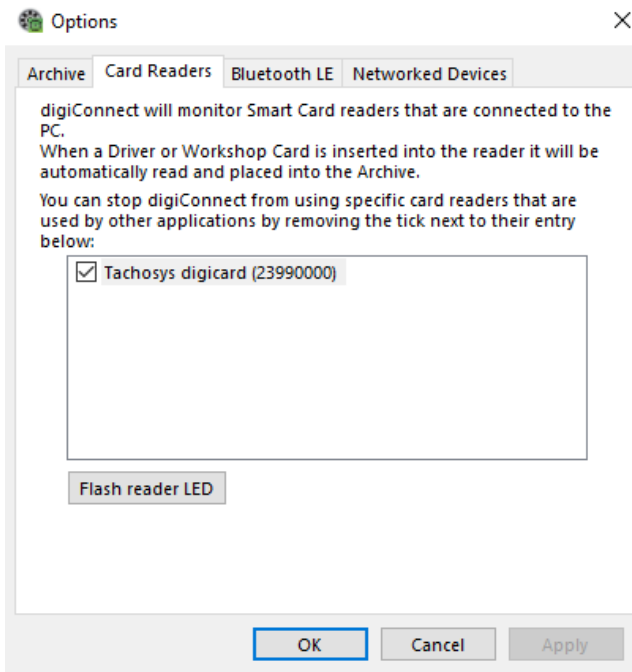
*Important: Do not connect the digicard before commencing the software installation.*

### Installing digiConnect:

1. Download the latest version of digiConnect from [www.tachosys.com/Software](http://www.tachosys.com/Software).
2. Select your required installation language and then click 'Next'.
3. You will receive a welcome message, simply click 'Next'.
4. Read the terms of the Licence Agreement then click on the 'I accept the terms in the Licence agreement' option and then click 'Next'. If you do not accept the terms the installation will be terminated.
5. Choose the folder where you wish the software program files to be installed. The default folder is the standard location for Windows® programs. Click 'Next'.
6. Click 'Install' to begin the installation. This may take several minutes.
7. Finally leave the box labelled 'Launch digiConnect' ticked and click 'Finish'.
8. If you opted to launch digiConnect at the end of the installation you will be taken to the main options menu to configure your individual settings.

# Connecting & Configuring the digicard

1. Connect the digicard to a free USB port on your PC.
2. Wait for Windows to locate and install the appropriate drivers and confirm that the hardware is ready to use.
3. Open the digiConnect software and select 'Options'
4. Your card reader will appear in the list in Card Readers tab (see below). If you are using a digicard device, you can use the "Flash reader LED" function to identify the device. This feature will not work with other card reading devices.



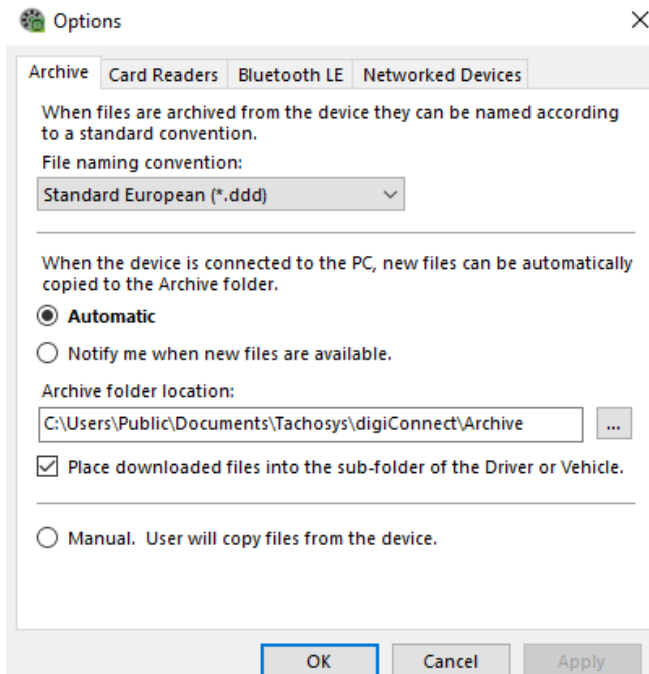
5. When a driver or workshop card is inserted into any connected digicard, the card will be automatically read. You can stop digiConnect from using specific card readers by removing the tick next to their entry or by selecting 'Stop Using Reader' from the main menu. If you need to re-enable a reader simply check the box next to that entry.
6. Click "Apply" and then "OK" to complete the configuration.

## digiConnect - Archiving

When installed, digiConnect will automatically create and use a directory for use as your Archive folder. This is the single location where digiConnect will store all the files that it downloads from driver cards or vehicles.

This directory can be altered, as well as the naming convention that the files will use.

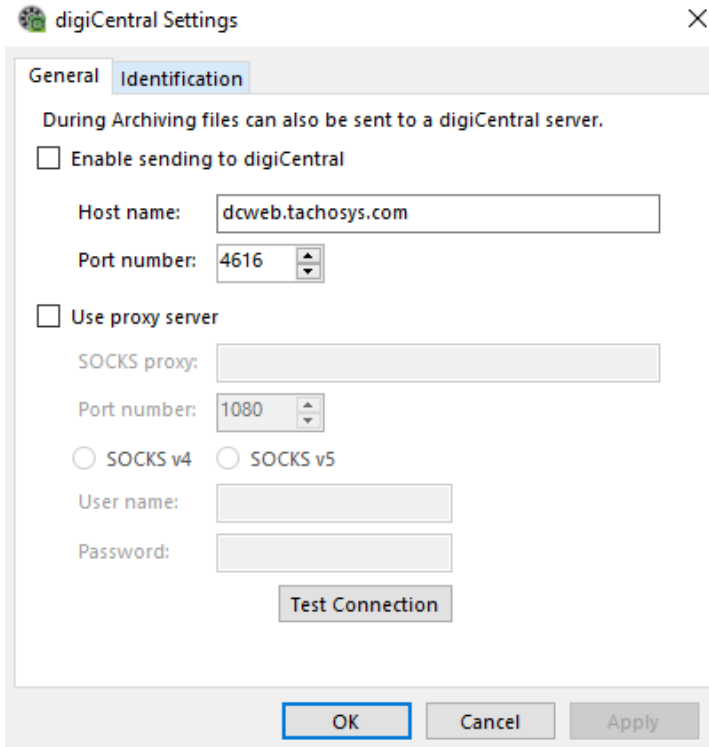
To edit these settings, open the digiConnect options window as per page 4 and go to the "Archive" tab (see below). Select the desired naming convention from the drop down box and use the browse button at the end of "Archive folder location" to browse and select a new location to store your downloaded files.



*Note: Card readers are not affected by other settings on this page. When a card reader is being monitored, the files are always automatically downloaded to the archive folder.*

# digicentral Configuration

If you plan to use a digicentral server, you can configure digiConnect to automatically upload the files it reads from your devices. To configure these settings, open digiconnect and select “digiCentral Settings”. (see below)



The screenshot shows the "digiCentral Settings" dialog box with the "Identification" tab selected. The dialog has a title bar with a close button (X) and a "digiCentral Settings" label. Below the title bar, there are two tabs: "General" and "Identification". The "Identification" tab is active and contains the following settings:

- A heading: "During Archiving files can also be sent to a digiCentral server."
- A checkbox labeled "Enable sending to digiCentral" which is currently unchecked.
- A text input field for "Host name:" containing the value "dcweb.tachosys.com".
- A spin box for "Port number:" set to "4616".
- A checkbox labeled "Use proxy server" which is currently unchecked.
- A text input field for "SOCKS proxy:" which is empty.
- A spin box for "Port number:" set to "1080".
- Two radio buttons: "SOCKS v4" (selected) and "SOCKS v5".
- A text input field for "User name:" which is empty.
- A text input field for "Password:" which is empty.
- A "Test Connection" button.

At the bottom of the dialog, there are three buttons: "OK" (highlighted with a blue border), "Cancel", and "Apply".

To enable automatic uploading, tick the “Enable sending to digiCentral” box and provide the Hostname and Port number given to you by your server provider. If you use a proxy server, you will also need to check the appropriate box and enter its details.

Test the connection and click “Apply” then “OK” to complete this configuration.

# Authentication & Troubleshooting

## Using digicard for remote authentication

You can use digicard for more than just reading cards. In conjunction with our digicentral Authenticate software, digicard can be used to make company cards available in digicentral for remote authentication and download operations. The digicentral server may be run by a third party or yourself. digicentral Authenticate runs as a service on your PC in the background so the connection to the company card is always live provided the service is running.

It is important to note that remote authentication only works with Tachosys products and digicentral. Third party devices are not compatible with this function.

digicentral Authenticate software and its associated user guide can be downloaded from [www.tachosys.com](http://www.tachosys.com).

Please see the [digicentral Authenticate user guide](#) to find out more about how to use digicard for the purpose of hosting company cards.

## Troubleshooting

### Using card readers from other manufacturers

Enabling card reader monitoring will prevent other programs using your card reader. The card reader will be dedicated to reading cards for digiConnect only. Monitoring can be temporarily disabled in order to briefly use the reader for another purpose, but care must be taken to re-enable monitoring and ensure that the device remains ticked in the Card Reader options.

### **digiConnect is not finding the card reader**

If your card reader is plugged into your PC and showing a power light and digiConnect is running but it does not appear in digiConnect the card reader may have been disabled. To re-enable that card reader, go to 'Options' in the digiConnect main menu, then check the box next to the card reader entry in the 'Card Readers' tab.



Albion House  
48 Albert Road North  
Reigate, Surrey, RH2 9EL  
United Kingdom

[info@tachosys.com](mailto:info@tachosys.com)

+44 (0) 208 687 3900



Join us on social media

